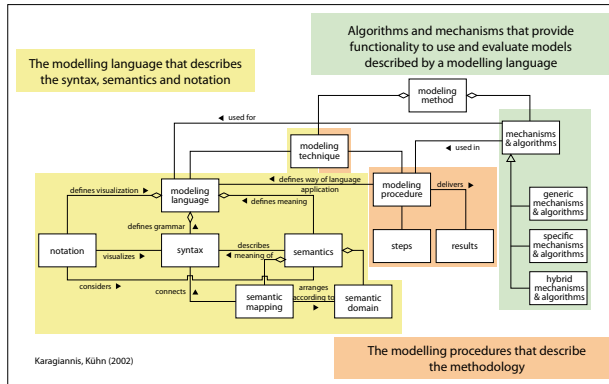


Topics

In today's enterprises, modelling methods are widely used on every level and they are mostly supported by modelling tools. These tools ease the design of machine-processable models and provide facility services, e.g. for accessing, exchanging and persistently storing meta-models and models, for applying algorithms and querying model contents. Additionally they enhance the value of models as an organisational knowledge platform.

Modelling tools and platforms which support domain specific methods are required to provide functionalities for user interaction and enable management capabilities for the execution environment in addition to the modelling method design and implementation.

The following generic modelling method framework comprises all the necessary ingredients for the conceptualization, i.e. early development and prototyping phases of modelling tools for domain specific modelling methods. The framework addresses (a) modelling languages – syntax, semantic and notation, (b) modelling procedures and (c) processing based on their mechanisms and algorithms.



The "Next Generation Enterprise Modelling" summer school provides a highly-interactive experimental environment where students and teachers focus on the domain "modelling" addressing especially:

- Foundations of Conceptual Modelling, i.e. formal methods and tools for modelling method creation, transformation and application.

Topics

- Technologies for Conceptual Modelling, i.e. model execution technologies, meta-modelling platforms, modelling compilers, adaption to diverse devices and multi-client applications.
- Application Domains, i.e. Enterprise Information Systems, e-Government, Health Care and Ambient Assisted Living.
- Cross-cutting issues, i.e. information security, privacy, risk management and governance, and quality assurance of models and methods.

A detailed topic description is available at www.omilab.org/camp2014.

Key Infos

Whom does the summer school address?

This summer school is for you:

- If you are a computer science, business informatics, information systems engineering or business administration student, who is interested in enterprise information systems.
- If you are interested in how conceptual modelling theories, technologies and their applications will look in the digital society.
- If you are interested in how models and modelling methods can be used to express knowledge both for humans and computers.
- If you are interested to work in international teams and to implement small prototypes applying theoretical concepts to create practical solutions.

What is expected from participants?

- To be proficient in English
- To have basic programming skills
- To be interested in Enterprise Information Systems
- To be keen to meet peers from across Europe
- To be interested in working with novel technologies and concepts

Key Infos

When and where to register?

Registration start: October 1st, 2013
Registration end: April 4th, 2014
Information about selection: April 11th, 2014

Online registration at: www.omilab.org/camp2014
Necessary documents:
- Registration form
- CV (Europass format, in English)
- Motivation letter
- Recommendation letter

When and where does it take place?

The event will be held in Klagenfurt, Austria and is hosted by the Alpen-Adria-Universität Klagenfurt.

Arrival: July 6th, 2014, whole day
Start summer school: July 7th, 2014 at 9 a.m.
End summer school: July 18th, 2014 at 6 p.m.
Departure: July 19th, 2014, whole day

Students are expected to participate for the whole duration.

What does it cost?

If you are a student at one of the partner universities presented on the back of this flyer, you are eligible for an EU grant.

If you are from any other university you are required to pay a participation fee covering accommodation (incl. breakfast), lunches and one outdoor event.

A limited number of rooms has been organized by the hosts in the student housing facilities of the Alpen-Adria-Universität Klagenfurt. Selected students can opt for such an accommodation on a first-come-first-serve basis.

Detailed information is available at www.omilab.org/camp2014.

Project Partners



Aalto University
Prof. Matti Rossi, Finland



Alpen-Adria-Universität Klagenfurt
Prof. Heinrich C. Mayr, Austria



FernUniversität in Hagen
Prof. Stefan Strecker, Germany



FHS St. Gallen - University of Applied Sciences
Prof. Ulrich Reimer, Switzerland



Karlsruhe Institute of Technology
Prof. Andreas Oberweis, Germany



KU Leuven
Prof. Jan Vanthienen, Belgium



Otto von Guericke University Magdeburg
Prof. Martin Henk, Germany



Radboud University Nijmegen
Prof. Henderik A. Proper, Netherlands



Riga Technical University
Prof. Marite Kirikova, Latvia



RWTH Aachen University
Prof. Bernhard Rumpe, Germany



The University of Manchester
Prof. Liping Zhao, United Kingdom



UNIVERSIDADE NOVA DE LISBOA

Universidade Nova De Lisboa
Prof. Luis M. Camarinha-Matos, Portugal



Universität Hamburg
Prof. Heinz Züllighoven, Germany



Universitat Politècnica de València
Prof. Oscar Pastor, Spain

Project Partners



University of Crete
Prof. Dimitris Plexousakis, Greece



University of Duisburg-Essen
Prof. Ulrich Frank, Germany



University of Piraeus
Prof. George Bohoris, Greece
Prof. Nineta Polemi, Greece



University of St. Gallen
Prof. Robert Winter, Switzerland



University of Trento
Prof. John Mylopoulos, Italy



University of Vienna
Prof. Dimitris Karagiannis, Austria

Contributors

Prof. Jürgen Ebert, University of Koblenz-Landau, Germany
Prof. Wilfried Grossmann, University of Vienna, Austria
Prof. Yoshinori Hara, Kyoto University, Japan
Dr. Manfred A. Jeusfeld, University of Skövde, Sweden
Prof. Pericles Loucopoulos, Loughborough University, United Kingdom
Prof. Wolfgang Reisig, Humboldt University Berlin, Germany
Prof. Kurt Sandkuhl, University of Rostock, Germany

Organisation

Elena-Teodora Miron
University of Vienna

Mag. Evelyn Grojer
Alpen-Adria-Universität Klagenfurt

E-Mail: events@omilab.org

OMLAB®

Apply to:



Next Generation Enterprise Modelling Methods | Frameworks | Tools

July 6th to 19th, 2014
Alpen-Adria-Universität Klagenfurt

SUMMER SCHOOL

www.omilab.org/camp2014

Disclaimer: This project has been funded with support from the European Commission. This publication [communication] reflects the views only of the author, and the Commission cannot be held responsible for any use which may be made of the information contained therein.